

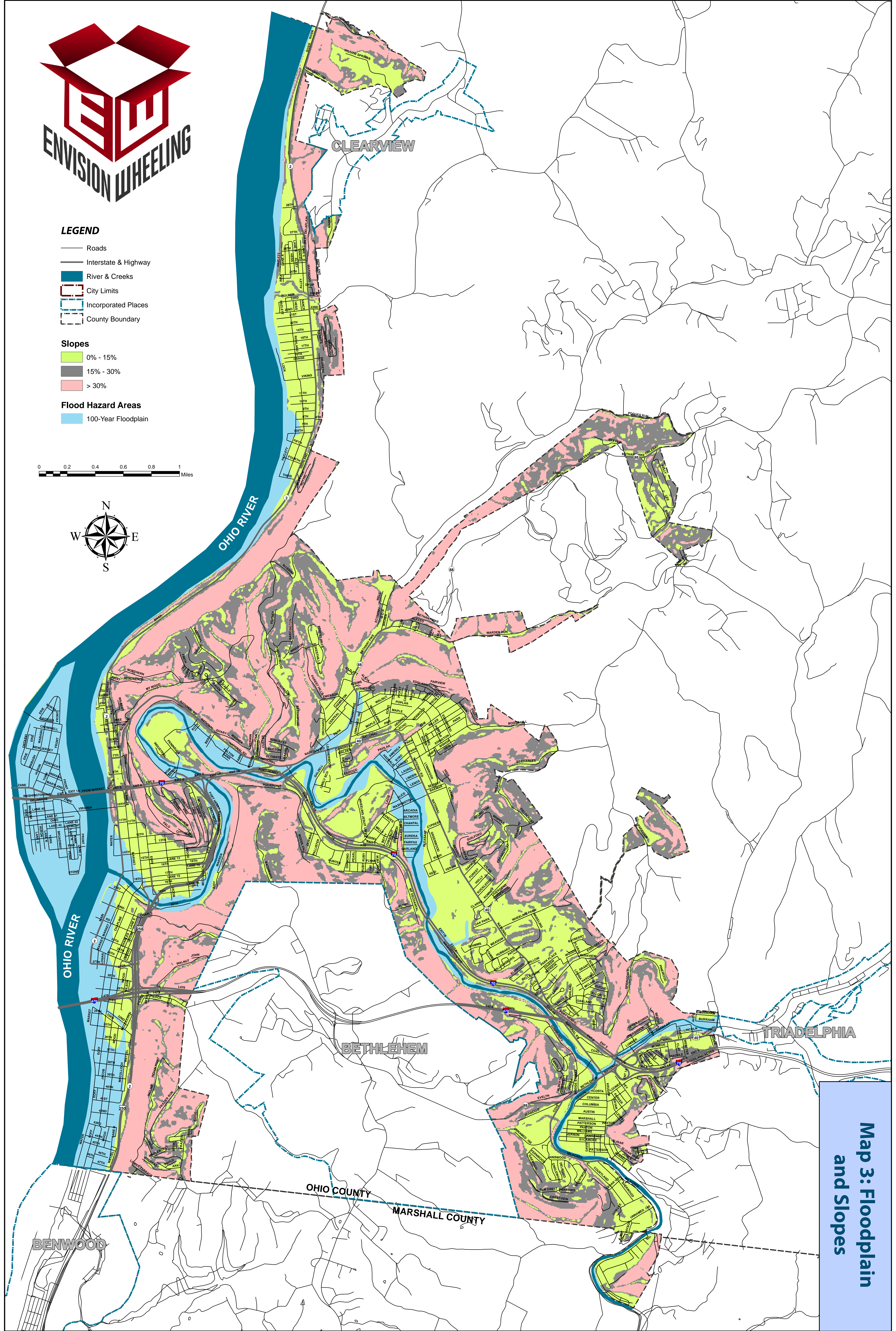
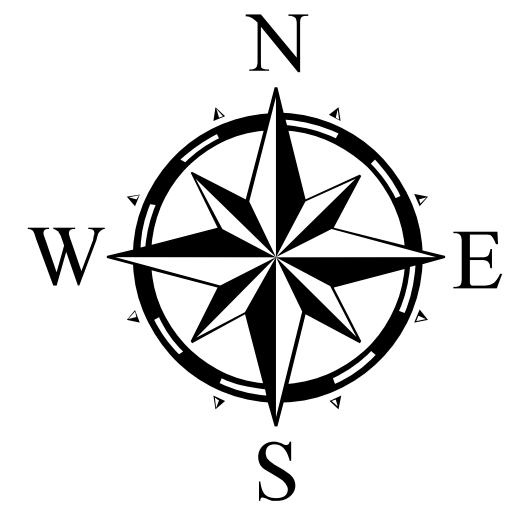
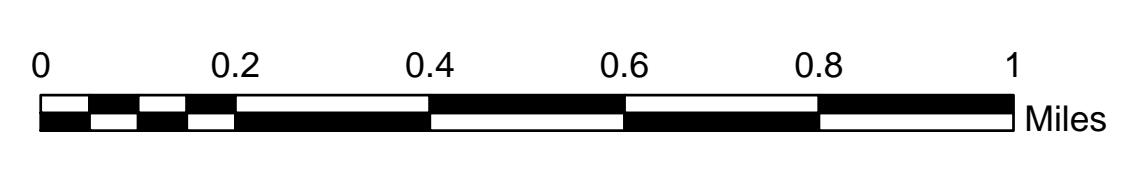


**LEGEND**

- Roads
- Interstate & Highway
- River & Creeks
- City Limits
- Incorporated Places
- County Boundary

- Slopes**
- 0% - 15%
  - 15% - 30%
  - > 30%

- Flood Hazard Areas**
- 100-Year Floodplain



**Map 3: Floodplain and Slopes**